

[Load B67\\_Collection\\_X.b67 library in Fantom/AX-Edge and JupiterX/Xm Editor](#)

[Load B67\\_Collection\\_X.b67 library in MC-707/101 Editor](#)

[Load FM\\_Lib26\\_X.LFM library in Fantom/AX-Edge and JupiterX/Xm Editor \(B67 ZEN FM synthesis\)](#)

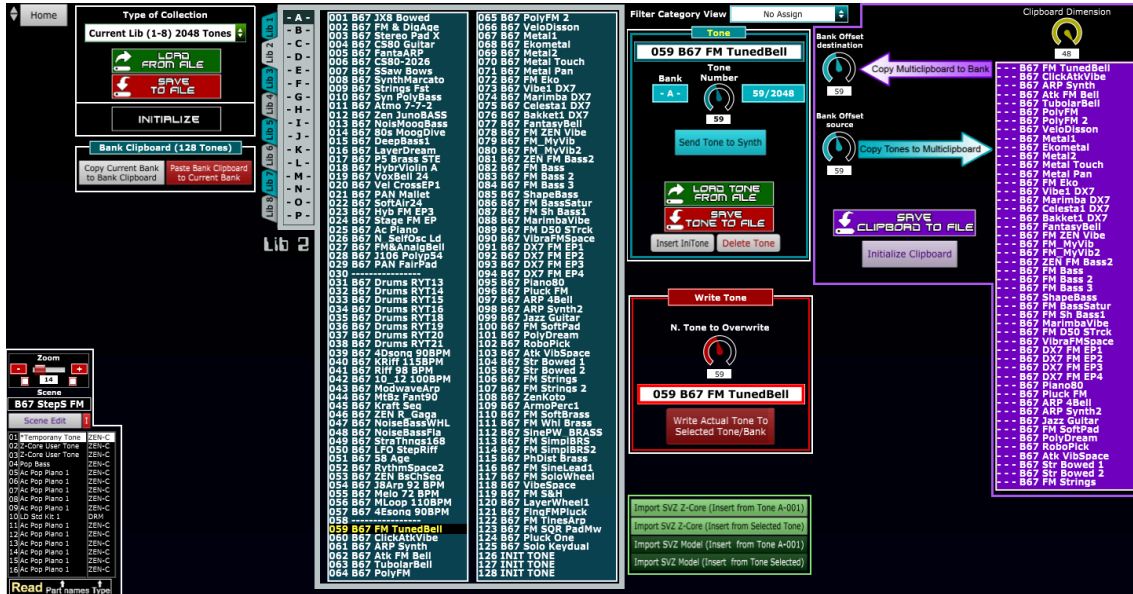
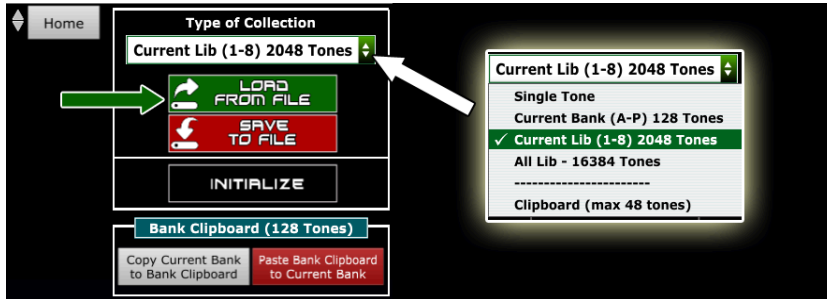
[Load della libreria B67\\_Collection\\_X.b67 nell'editor per Fantom/AX-Edge e JupiterX/Xm Editor](#)

[Load delle librerie B67\\_Collection\\_X.b67 nell'editor per MC-707/101 Editor](#)

[Load della libreria FM\\_Lib26\\_X.LFM nell'editor per Fantom/AX-Edge e JupiterX/Xm \(sintesi B67 ZEN FM\)](#)

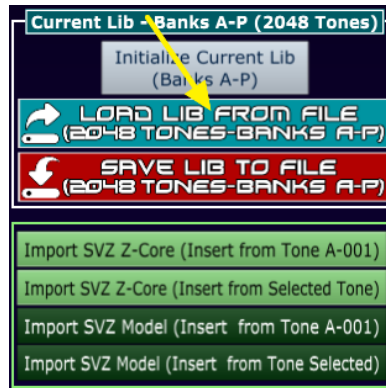
# Load B67\_Collection\_X.b67 library in Fantom/AX-Edge and JupiterX/Xm Editor

- To load the ZEN-Core tone library click on **LIBRARIAN**
- Select Type of Collection= "Current Lib (1-8) 2048 Tones", click on "Load From File" select and open the file **B67\_Collection\_X.b67**

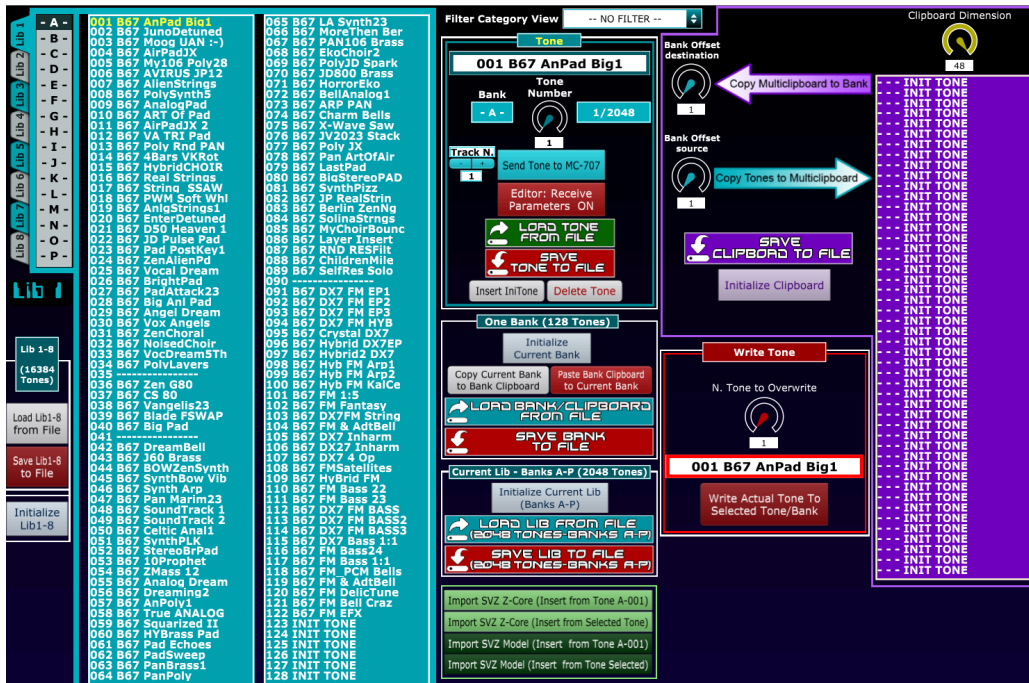


# Load B67\_Collection\_X.b67 library in MC-707/101 Editor

- Click on **LIBRARIAN**




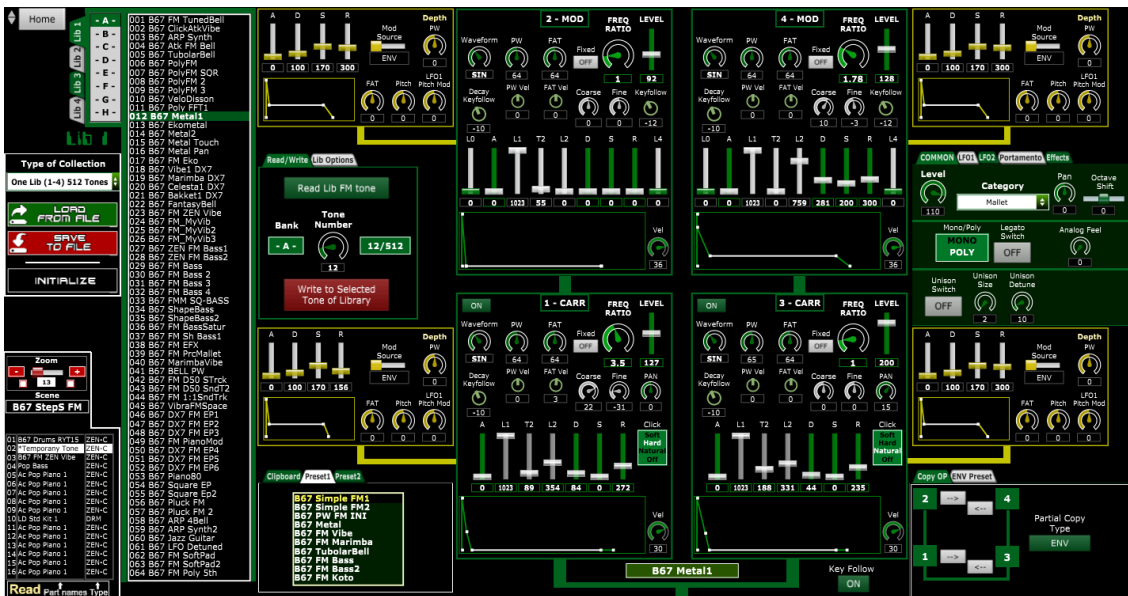
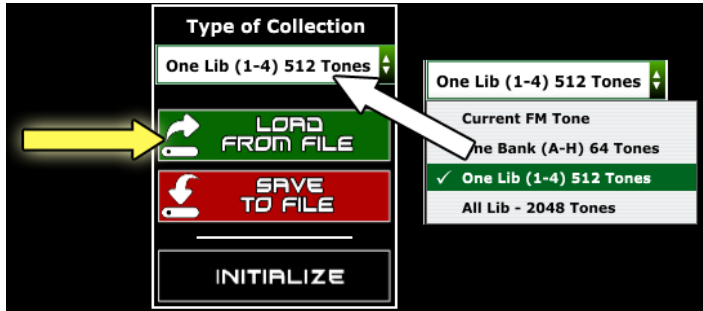
- Click on "Load Lib from File", select and open the file **B67\_Collection\_X.b67**



# Load FM\_Lib26\_X.LFM library in Fantom/AX-Edge and JupiterX/Xm Editor (B67 ZEN FM synthesis)

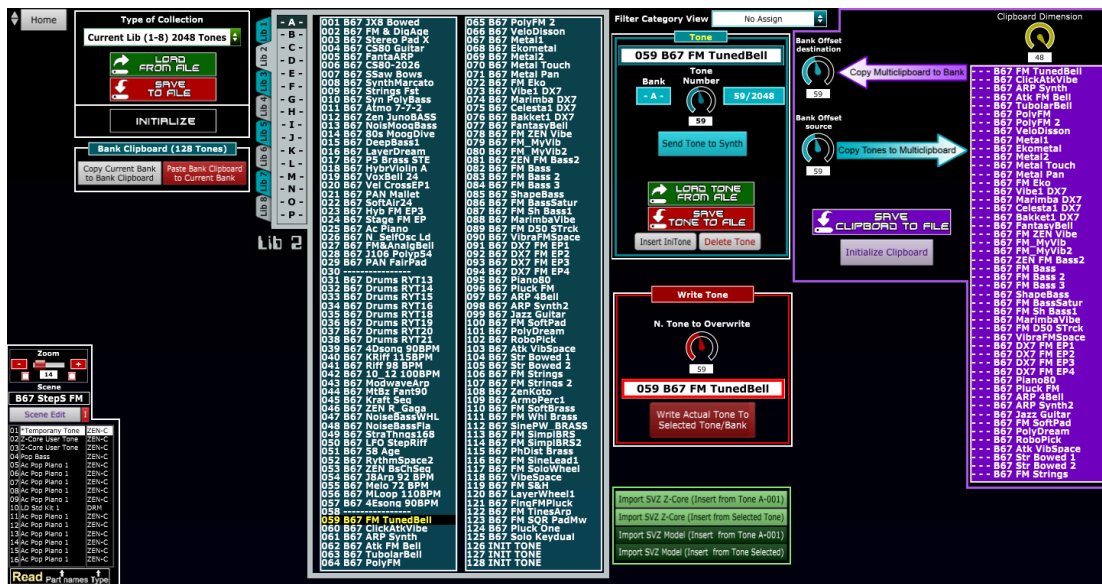
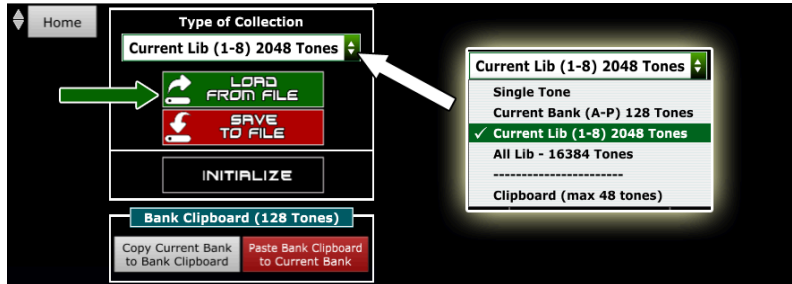


- To load the tone library with B67 ZEN FM synthesis click on 
- Select Type of Collection= "One Lib (1-4) 512 Tones", click on "Load From File" select and open the file Load FM\_Lib26\_X.LFM



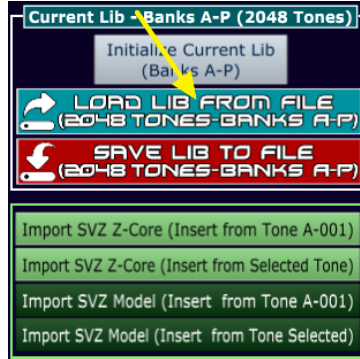
# Load della libreria B67\_Collection\_X.b67 nell'editor per Fantom/AX-Edge e JupiterX/Xm Editor

- Per caricare la libreria di toni ZEN-Core click on **LIBRARIAN**
- Selezionare Type of Collection= "Current Lib (1-8) 2048 Tones", click su "Load From File" selezionare e aprire il file **B67\_Collection\_X.b67**



# Load delle librerie B67\_Collection\_X.b67 nell'editor per MC-707/101 Editor

- Click su 



Current Lib - Banks A-P (2048 Tones)

Initialize Current Lib (Banks A-P)

**LOAD LIB FROM FILE (2048 TONES-BANKS A-P)**

SAVE LIB TO FILE (2048 TONES-BANKS A-P)

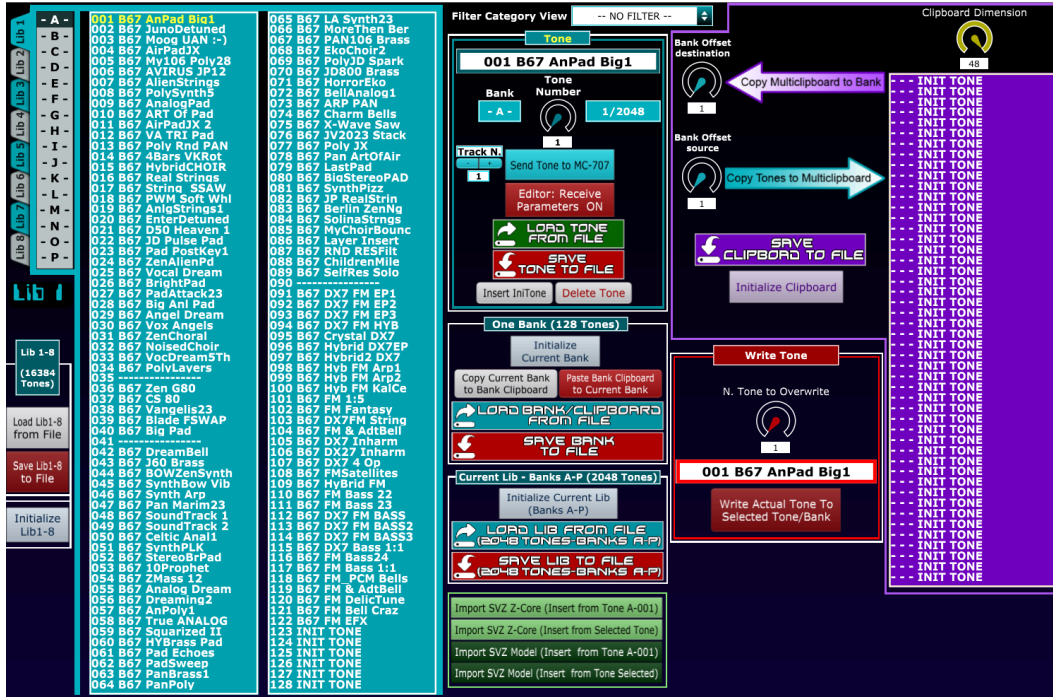
Import SVZ Z-Core (Insert from Tone A-001)

Import SVZ Z-Core (Insert from Selected Tone)

Import SVZ Model (Insert from Tone A-001)

Import SVZ Model (Insert from Tone Selected)

- Click su "Load Lib from File", selezionare e aprire il file NomeFile.B67



The screenshot shows the MC-707/101 Editor interface. On the left is a library list with columns for bank number, name, and tone number. The 'Lib 1-8' is selected, showing 16384 tones. The main area displays the '001 B67 AnPad Big1' bank with a 'Tone Number' of 1/2048. The 'Filter Category View' is set to 'Tone'. The 'Clipboard Dimension' is 48. The 'Write Tone' button is highlighted, and the 'N. Tone to Overwrite' field is set to 1. The 'Clipboard Dimension' field is set to 48.

# Load della libreria FM\_Lib26\_X.LFM nell'editor per Fantom/AX-Edge e JupiterX/Xm (sintesi B67 ZEN FM)



- Per caricare la libreria di toni aventi sintesi **B67 ZEN FM** click su
- Selezionare Type of Collection= "One Lib (1-4) 512 Tones", click su "Load From File", selezionare aprire il file **Load FM\_Lib26\_X.LFM**

